

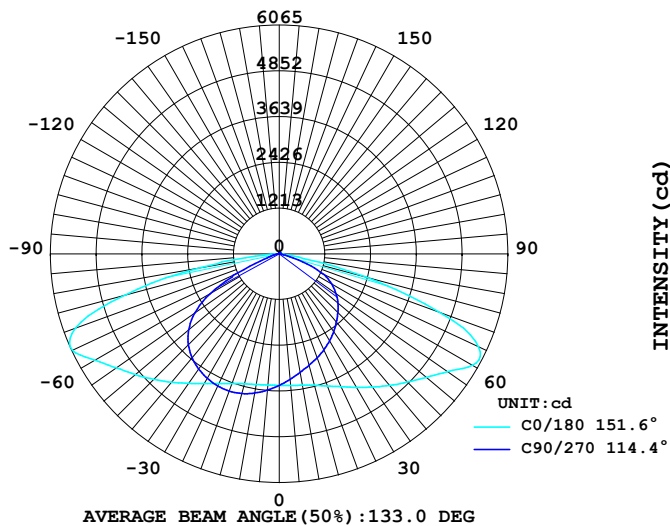
LUMINAIRE PHOTOMETRIC TEST REPORT

Report number:

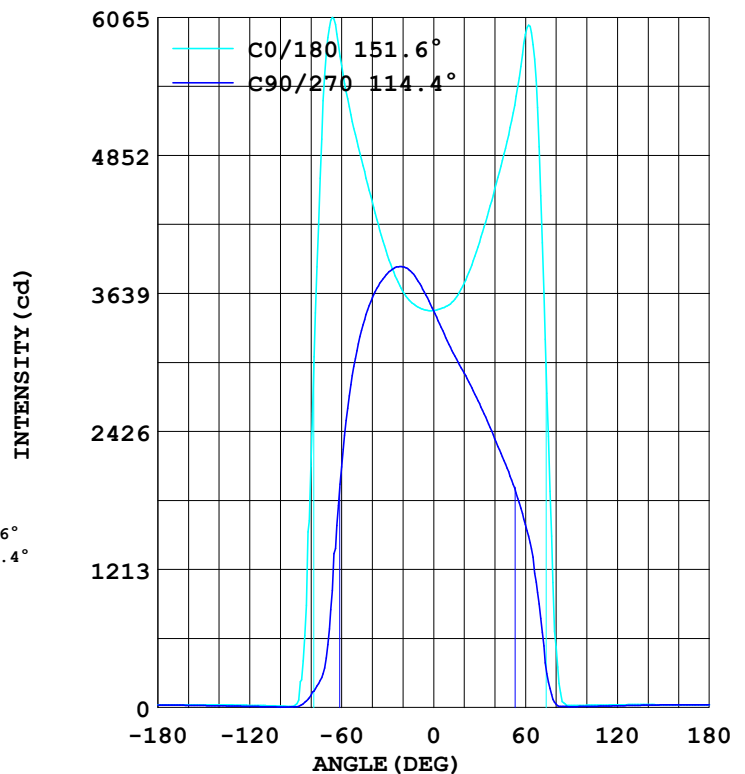
MANUFACTURER: ILUMEN GMBH	Address:	
NAME: Muller	TYPE: IL-ST11-D10040-TY2	WEIGHT:
SPECIFICATION: 5050LED 4000K Type II	DIMENSION:	SERIAL No.:

DATA OF LAMP		Imax(cd)	6065	S/MH (C0/180)	1.92
MODEL		EFFICIENCY (%)	100.0	S/MH (C90/270)	1.60
NOMINAL POWER(W)	100	TOTAL FLUX(lm)	14932	Voltage(V)	230.5
RATED VOLTAGE (V)	230	EFFICIENCY (lm/W)	148.3	Current(A)	0.438
NOMINAL FLUX(lm)	14932.0	η up (%)	0.7	Power(W)	100.6
LAMPS QUANTITY	1	η down (%)	99.3	Power Factor (PF)	0.996
TEST VOLTAGE (V)	230.5	Effective Flux(lm)	14932.0	EEI	0.101

LUMINOUS INTENSITY DISTRIBUTION



LUMINOUS INTENSITY DISTRIBUTION



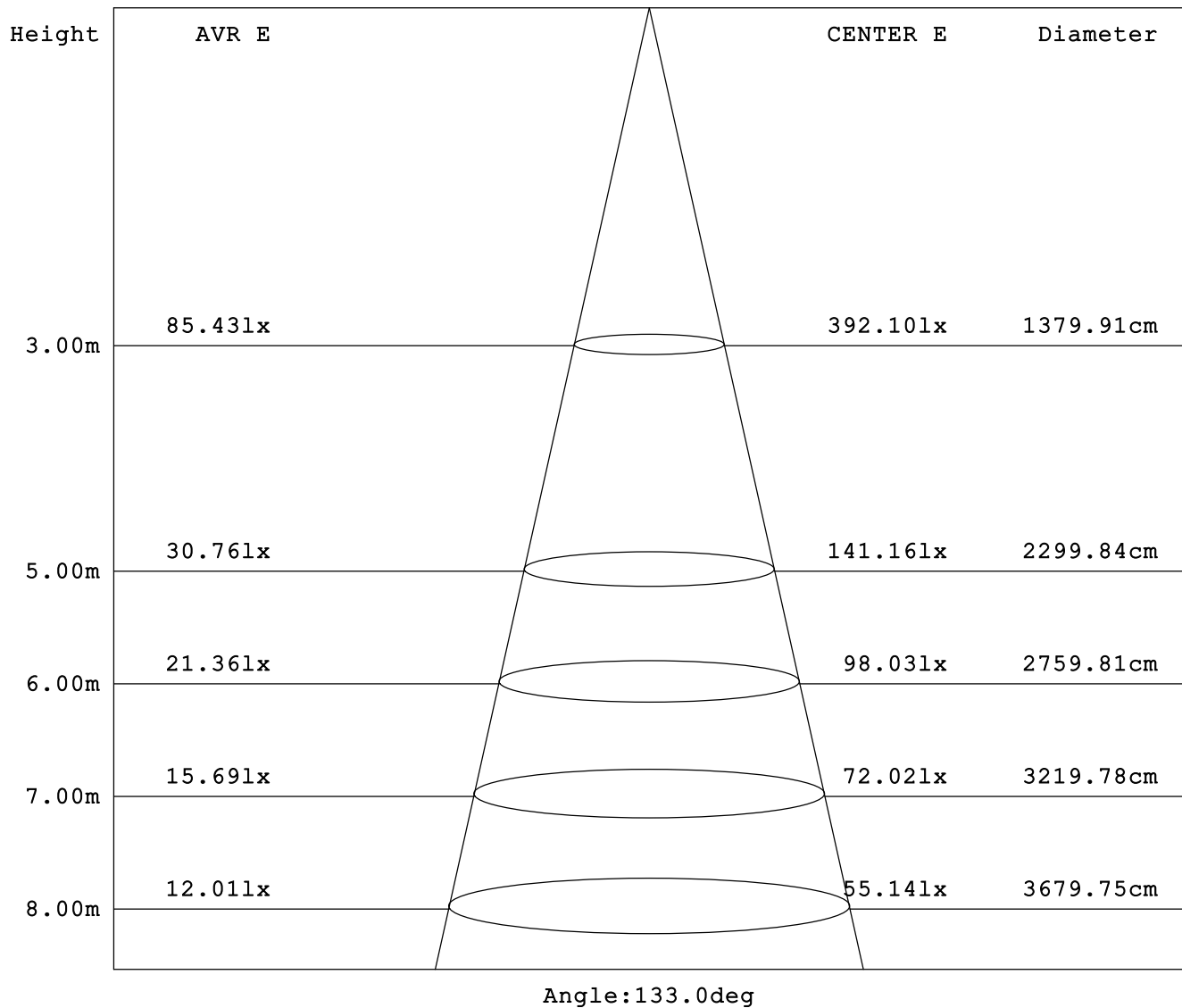
Test System:
 Temperature: 25.3 DEG
 Operators:
 Test Date: 2025.03.22

Test Set: 5.0 deg/s C-Gamma (TYPE C)
 Humidity: 65.0%
 Test Distance: 10.000 m
 Remarks:

AVERAGE AND CENTER E Figure

Report number:

MANUFACTURER: ILUMEN GMBH	Address:	
NAME: Muller	TYPE:IL-ST11-D10040-TY2	WEIGHT:
SPECIFICATION:5050LED 4000K Type II	DIMENSION:	SERIAL No.:



Test System:
Temperature:25.3DEG
Operators:
Test Date:2025.03.22

Test Set: 5.0deg/s C-Gamma (TYPE C)
Humidity:65.0%
Test Distance:10.000 m
Remarks:

ZONAL FLUX DIAGRAM

Report number:

MANUFACTURER: ILUMEN GMBH	Address:	
NAME: Muller	TYPE: IL-ST11-D10040-TY2	WEIGHT:
SPECIFICATION: 5050LED 4000K Type II	DIMENSION:	SERIAL No.:

γ	C0	C45	C90	C135	C180	C225	C270	C315	γ	Zone	total
5.0	3493	3593	3626	3586	3506	3394	3341	3400	0- 5	83.46	83.46
10.0	3518	3690	3747	3677	3538	3302	3192	3315	5- 10	250.0	333.5
15.0	3567	3782	3836	3753	3608	3213	3062	3227	10- 15	415.5	749.0
20.0	3657	3874	3873	3818	3729	3132	2939	3143	15- 20	579.1	1328
25.0	3795	3960	3866	3864	3889	3054	2809	3062	20- 25	740.4	2069
30.0	3973	4025	3814	3897	4088	2967	2671	2966	25- 30	897.7	2966
35.0	4192	4075	3728	3906	4314	2877	2520	2870	30- 35	1049	4015
40.0	4443	4086	3598	3891	4557	2765	2361	2753	35- 40	1190	5205
45.0	4710	4046	3408	3838	4807	2621	2204	2610	40- 45	1315	6520
50.0	4978	3933	3136	3703	5097	2447	2034	2433	45- 50	1417	7937
55.0	5278	3696	2740	3422	5452	2236	1839	2200	50- 55	1483	9420
60.0	5643	3258	2114	2963	5914	1968	1608	1917	55- 60	1504	10924
65.0	6050	2458	1351	2138	5824	1597	1322	1530	60- 65	1450	12373
70.0	5745	1083	434.1	912.5	4496	1028	782.5	972.8	65- 70	1214	13588
75.0	4233	314.4	210.8	291.3	2384	420.7	224.2	379.0	70- 75	777.0	14365
80.0	2121	174.6	104.4	156.2	533.2	89.29	28.83	85.74	75- 80	346.2	14711
85.0	409.3	67.28	33.60	64.07	40.90	19.88	9.032	18.66	80- 85	101.1	14812
90.0	22.82	16.69	6.339	15.87	17.91	5.434	8.190	5.181	85- 90	18.25	14830
95.0	10.75	10.98	4.712	10.25	18.63	7.226	8.471	7.075	90- 95	5.708	14836
100.0	13.17	10.86	5.105	9.917	19.84	9.299	9.368	9.304	95-100	5.600	14842
105.0	15.32	11.65	6.283	10.53	21.00	11.26	10.60	11.47	100-105	6.177	14848
110.0	17.03	12.77	7.517	11.42	21.88	13.10	12.11	13.42	105-110	6.765	14855
115.0	18.30	13.94	8.695	12.42	22.60	14.73	13.63	15.26	110-115	7.220	14862
120.0	19.46	15.06	9.929	13.42	23.59	16.13	15.14	16.77	115-120	7.546	14869
125.0	20.78	16.24	11.16	14.43	25.03	17.42	16.60	18.16	120-125	7.754	14877
130.0	22.43	17.42	12.45	15.54	26.13	18.87	18.00	19.50	125-130	7.847	14885
135.0	23.87	18.48	13.80	16.60	26.46	20.27	19.46	20.67	130-135	7.796	14893
140.0	24.47	19.32	15.03	17.60	25.96	21.51	20.98	21.78	135-140	7.526	14900
145.0	24.25	19.99	16.15	18.38	25.25	22.24	22.16	22.39	140-145	7.013	14907
150.0	23.76	20.44	17.22	18.99	24.53	22.52	22.88	22.56	145-150	6.309	14914
155.0	23.26	20.83	18.17	19.61	24.03	22.68	23.39	22.62	150-155	5.485	14919
160.0	22.93	21.23	19.13	20.16	23.70	22.74	23.73	22.56	155-160	4.587	14924
165.0	22.82	21.62	20.08	20.67	23.54	22.74	23.89	22.50	160-165	3.635	14927
170.0	22.88	22.07	20.98	21.22	23.37	22.68	23.78	22.39	165-170	2.636	14930
175.0	22.88	22.35	21.71	21.67	23.21	22.46	23.33	22.06	170-175	1.598	14931
180.0	23.10	22.63	22.49	22.06	23.10	22.29	22.77	21.67	175-180	0.534	14932
DEG	LUMINOUS INTENSITY:cd									UNIT:lm	

Test System:
Temperature:25.3DEG
Operators:
Test Date:2025.03.22

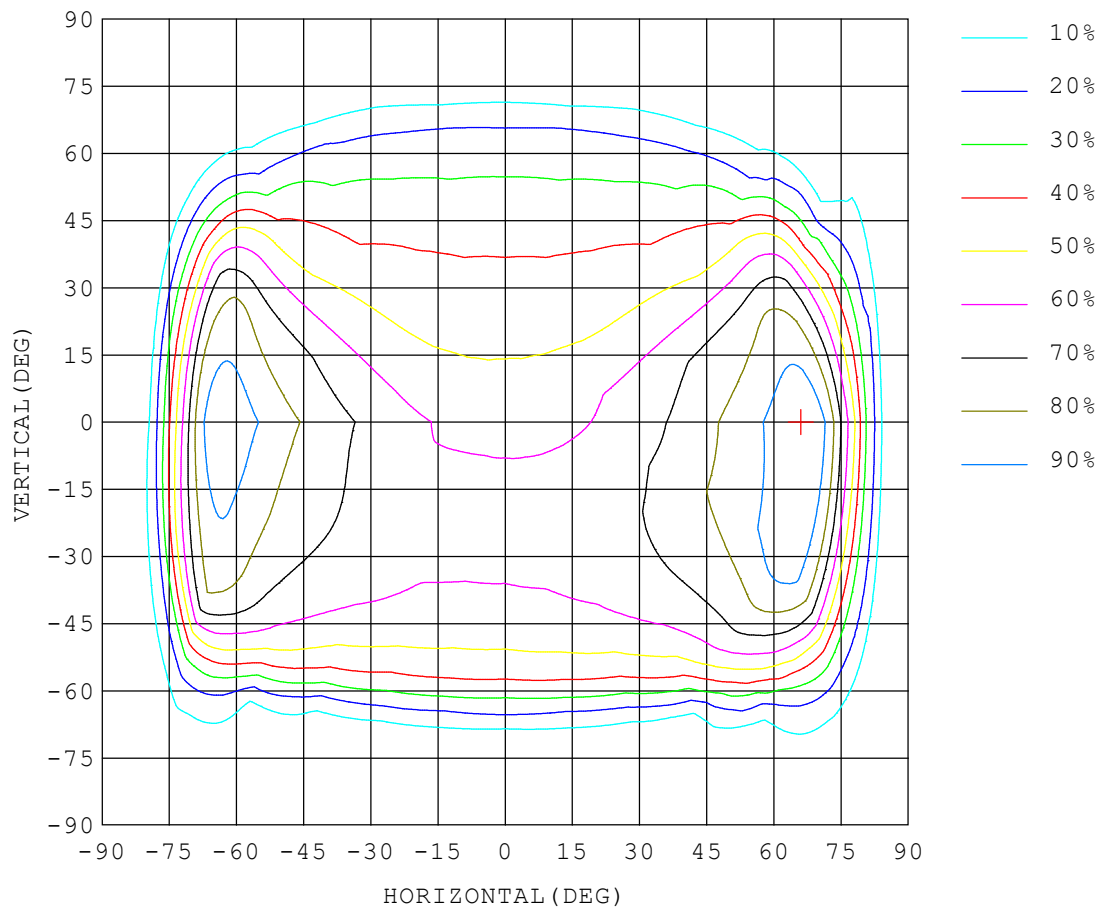
Test Set: 5.0deg/s C-Gamma (TYPE C)
Humidity:65.0%
Test Distance:10.000 m
Remarks:

ISOCANDELA DIAGRAM

Report number:

MANUFACTURER: ILUMEN GMBH	Address:	
NAME: Muller	TYPE:IL-ST11-D10040-TY2	WEIGHT:
SPECIFICATION:5050LED 4000K Type II	DIMENSION:	SERIAL No.:

UNIT: cd



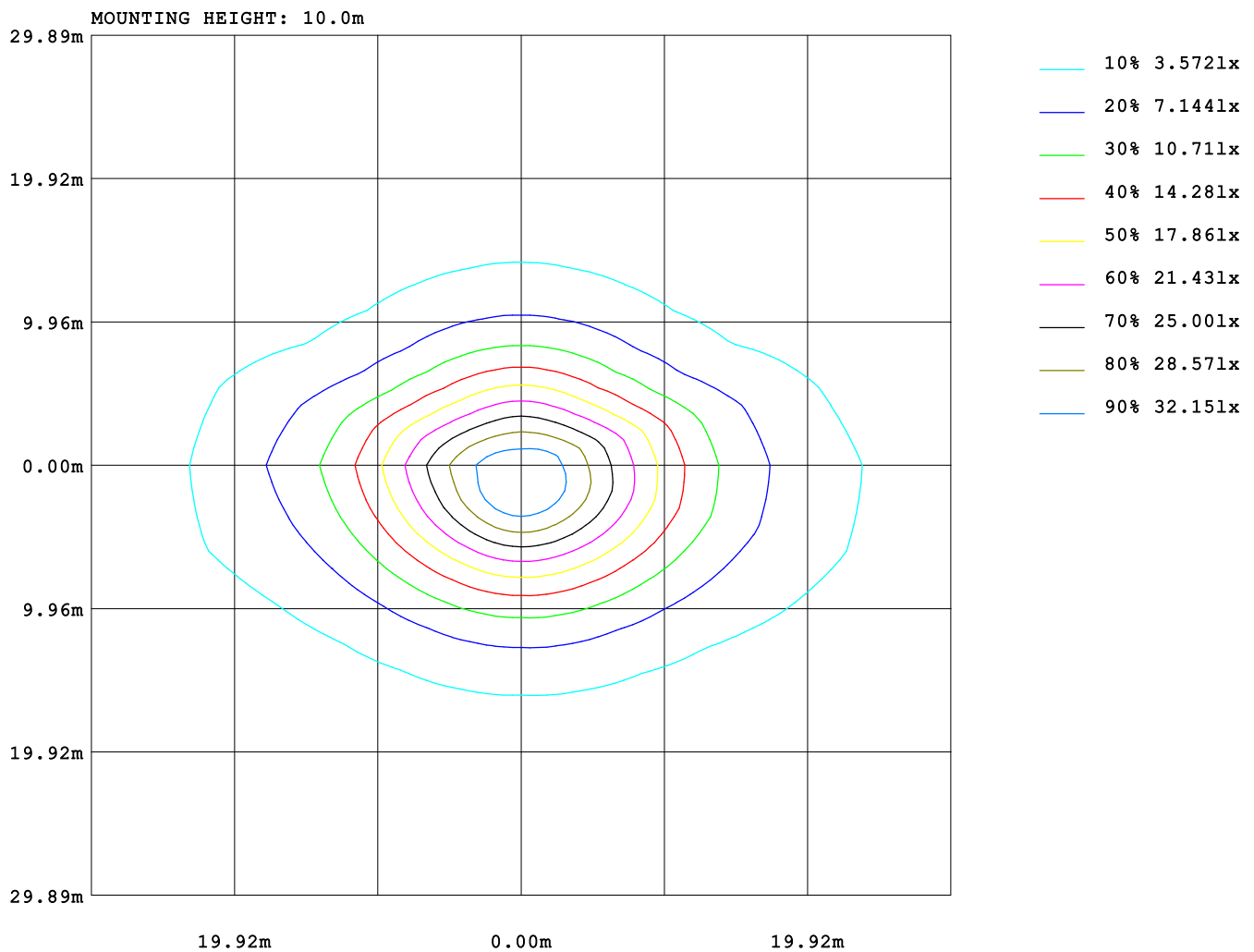
Test System:
Temperature:25.3DEG
Operators:
Test Date:2025.03.22

Test Set: 5.0deg/s C-Gamma (TYPE C)
Humidity:65.0%
Test Distance:10.000 m
Remarks:

ISOLUX DIAGRAM

Report number:

MANUFACTURER: ILUMEN GMBH	Address:	
NAME: Muller	TYPE: IL-ST11-D10040-TY2	WEIGHT:
SPECIFICATION: 5050LED 4000K Type II	DIMENSION:	SERIAL No.:



Test System:
Temperature: 25.3DEG
Operators:
Test Date: 2025.03.22

Test Set: 5.0deg/s C-Gamma (TYPE C)
Humidity: 65.0%
Test Distance: 10.000 m
Remarks:

LUMINOUS DISTRIBUTION INTENSITY DATA

Report number:

MANUFACTURER: ILUMEN GMBH	Address:	
NAME: Muller	TYPE:IL-ST11-D10040-TY2	WEIGHT:
SPECIFICATION:5050LED 4000K Type II	DIMENSION:	SERIAL No.:

UNIT: cd

C (DEG) γ (DEG)	0	15	30	45	60	75	90	105	120	135	150	165	180	195	210
0.0	3489	3489	3489	3489	3489	3489	3489	3489	3489	3489	3489	3489	3489	3489	3489
5.0	3493	3528	3561	3593	3611	3627	3626	3624	3606	3586	3555	3524	3506	3471	3429
10.0	3518	3585	3641	3690	3721	3747	3747	3743	3712	3677	3625	3570	3538	3467	3381
15.0	3567	3657	3729	3782	3813	3836	3836	3829	3794	3753	3694	3622	3608	3490	3349
20.0	3657	3775	3842	3874	3874	3880	3873	3867	3839	3818	3776	3715	3729	3554	3328
25.0	3795	3935	3979	3960	3908	3886	3866	3865	3851	3864	3874	3850	3889	3650	3319
30.0	3973	4121	4122	4025	3912	3852	3814	3822	3828	3897	3976	4006	4088	3781	3321
35.0	4192	4341	4260	4075	3880	3777	3728	3737	3772	3906	4071	4186	4314	3937	3318
40.0	4443	4569	4386	4086	3815	3670	3598	3617	3685	3891	4154	4366	4557	4104	3294
45.0	4710	4795	4480	4046	3696	3510	3408	3444	3557	3838	4194	4534	4807	4274	3235
50.0	4978	5009	4513	3933	3477	3252	3136	3182	3340	3703	4184	4687	5097	4436	3128
55.0	5278	5242	4498	3696	3114	2859	2740	2798	2984	3422	4107	4855	5452	4604	2965
60.0	5643	5519	4444	3258	2527	2256	2114	2204	2399	2963	3925	5053	5914	4832	2711
65.0	6050	5867	4284	2458	1633	1329	1351	1294	1526	2138	3529	5317	5824	4816	2262
70.0	5745	5522	3310	1083	580	479	434	472	544	913	2401	5147	4496	3643	1390
75.0	4233	4021	1576	314	247	237	211	231	235	291	671	3793	2384	1565	569
80.0	2121	1693	314	175	137	125	104	122	135	156	190	1355	533	219	124
85.0	409	311	93.0	67.2	43.2	45.2	33.6	45.2	43.2	64.0	72.5	268	40.9	26.8	35.2
90.0	22.8	31.0	14.2	16.6	7.46	12.5	6.33	12.1	6.87	15.8	12.4	27.5	17.9	10.8	14.1
95.0	10.7	16.4	8.35	10.9	5.60	9.50	4.71	9.09	5.36	10.2	7.48	15.6	18.6	12.7	14.2
100.0	13.1	16.8	9.75	10.8	5.72	8.54	5.10	8.47	5.41	9.91	8.59	15.9	19.8	14.9	15.6
105.0	15.3	17.9	11.5	11.6	6.95	9.11	6.28	9.03	6.64	10.5	10.1	16.8	21.0	16.6	16.8
110.0	17.0	19.0	13.3	12.7	8.30	9.95	7.51	9.82	7.87	11.4	11.6	17.8	21.8	18.0	18.0
115.0	18.3	20.0	15.0	13.9	9.59	10.7	8.69	10.6	9.05	12.4	13.1	18.6	22.6	19.1	19.0
120.0	19.4	20.9	16.4	15.0	10.9	11.7	9.92	11.5	10.2	13.4	14.3	19.2	23.5	20.4	20.0
125.0	20.7	21.9	17.8	16.2	12.2	12.7	11.1	12.5	11.5	14.4	15.5	20.0	25.0	21.9	21.2
130.0	22.4	23.0	19.1	17.4	13.6	13.8	12.4	13.6	12.8	15.5	16.7	21.1	26.1	23.4	22.5
135.0	23.8	24.0	20.1	18.4	15.0	15.0	13.8	14.8	14.1	16.6	17.9	22.1	26.4	24.2	23.5
140.0	24.4	24.5	20.8	19.3	16.2	16.1	15.0	15.9	15.4	17.6	18.7	22.8	25.9	24.2	24.1
145.0	24.2	24.4	21.1	19.9	17.2	17.1	16.1	16.9	16.4	18.3	19.3	22.8	25.2	23.9	24.1
150.0	23.7	24.0	21.3	20.4	18.2	18.1	17.2	17.9	17.4	18.9	19.6	22.6	24.5	23.4	24.0
155.0	23.2	23.7	21.5	20.8	19.0	19.0	18.1	18.9	18.2	19.6	19.9	22.4	24.0	23.0	23.7
160.0	22.9	23.5	21.6	21.2	19.7	19.8	19.1	19.7	19.1	20.1	20.2	22.1	23.7	22.8	23.5
165.0	22.8	23.3	21.7	21.6	20.4	20.6	20.0	20.5	19.9	20.6	20.5	22.0	23.5	22.6	23.4
170.0	22.8	23.1	22.0	22.0	21.1	21.4	20.9	21.3	20.6	21.2	20.9	22.1	23.3	22.6	23.2
175.0	22.8	23.0	22.2	22.3	21.7	21.9	21.7	21.8	21.2	21.6	21.3	22.1	23.2	22.5	23.0
180.0	23.1	23.0	22.5	22.6	22.2	22.4	22.4	22.3	21.8	22.0	21.6	22.1	23.1	22.5	22.7

Test System:
Temperature:25.3DEG
Operators:
Test Date:2025.03.22

Test Set: 5.0deg/s C-Gamma (TYPE C)
Humidity:65.0%
Test Distance:10.000 m
Remarks:

LUMINOUS DISTRIBUTION INTENSITY DATA

Report number:

MANUFACTURER: ILUMEN GMBH	Address:	
NAME: Muller	TYPE:IL-ST11-D10040-TY2	WEIGHT:
SPECIFICATION:5050LED 4000K Type II	DIMENSION:	SERIAL No.:

UNIT: cd

C (DEG) γ (DEG)	225	240	255	270	285	300	315	330	345
0.0	3489	3489	3489	3489	3489	3489	3489	3489	3489
5.0	3394	3364	3349	3341	3351	3367	3400	3436	3474
10.0	3302	3236	3204	3192	3207	3246	3315	3398	3484
15.0	3213	3121	3073	3062	3075	3126	3227	3371	3520
20.0	3132	3005	2954	2939	2952	3010	3143	3357	3591
25.0	3054	2896	2831	2809	2826	2893	3062	3346	3695
30.0	2967	2783	2698	2671	2692	2777	2966	3346	3833
35.0	2877	2659	2554	2520	2548	2651	2870	3343	3994
40.0	2765	2532	2403	2361	2395	2521	2753	3311	4167
45.0	2621	2393	2245	2204	2238	2379	2610	3240	4326
50.0	2447	2215	2068	2034	2058	2195	2433	3110	4478
55.0	2236	1999	1861	1839	1849	1969	2200	2925	4619
60.0	1968	1746	1618	1608	1604	1706	1917	2642	4801
65.0	1597	1419	1321	1322	1298	1374	1530	2152	4611
70.0	1028	897	814	783	788	883	973	1277	3313
75.0	421	393	229	224	214	360	379	525	1523
80.0	89.2	70.0	29.9	28.8	23.7	67.7	85.7	121	203
85.0	19.8	20.8	3.71	9.03	3.19	16.3	18.6	35.3	25.8
90.0	5.43	9.14	3.71	8.19	3.64	8.82	5.18	14.0	11.4
95.0	7.22	9.36	4.94	8.47	4.88	9.10	7.07	14.0	12.3
100.0	9.29	10.3	6.52	9.36	6.45	10.1	9.30	15.5	14.6
105.0	11.2	11.6	8.32	10.6	8.24	11.6	11.4	17.0	16.5
110.0	13.1	13.1	10.1	12.1	10.1	13.1	13.4	18.4	17.9
115.0	14.7	14.5	11.9	13.6	12.0	14.6	15.2	19.6	19.3
120.0	16.1	15.9	13.7	15.1	13.7	16.2	16.7	21.0	20.7
125.0	17.4	17.2	15.2	16.6	15.4	17.5	18.1	22.1	22.0
130.0	18.8	18.6	16.9	18.0	17.0	18.9	19.5	23.1	23.3
135.0	20.2	20.0	18.5	19.4	18.5	20.2	20.6	23.9	24.0
140.0	21.5	21.3	20.1	20.9	20.0	21.5	21.7	24.2	23.9
145.0	22.2	22.3	21.4	22.1	21.3	22.5	22.3	24.2	23.5
150.0	22.5	22.9	22.3	22.8	22.1	23.0	22.5	23.9	23.1
155.0	22.6	23.2	22.8	23.3	22.5	23.2	22.6	23.6	22.6
160.0	22.7	23.4	23.1	23.7	22.8	23.3	22.5	23.3	22.3
165.0	22.7	23.4	23.1	23.8	22.9	23.3	22.5	23.0	22.1
170.0	22.6	23.3	23.0	23.7	22.8	23.2	22.3	22.8	21.9
175.0	22.4	22.9	22.5	23.3	22.4	22.7	22.0	22.4	21.6
180.0	22.2	22.4	22.2	22.7	22.0	22.1	21.6	22.0	21.6

Test System:
Temperature:25.3DEG
Operators:
Test Date:2025.03.22

Test Set: 5.0deg/s C-Gamma (TYPE C)
Humidity:65.0%
Test Distance:10.000 m
Remarks: